

# Methane Emissions from Estuarine Coastal Wetlands: Implications for Global Change Effect

**Lijie Liu**  
**Dongqi Wang\***  
**Shu Chen**

Key Lab. of Geographic Information Science (Ministry of Education)  
East China Normal Univ.  
200241, Shanghai, China  
and  
School of Geographical Sciences  
East China Normal Univ.  
200241, Shanghai, China

**Zhongjie Yu**

Dep. of Geology and Environmental Science  
Univ. of Pittsburgh  
Pittsburgh, PA 15260

**Yunkai Xu**  
**Yu Li**

Key Lab. of Geographic Information Science (Ministry of Education)  
East China Normal Univ.  
200241, Shanghai, China  
and  
School of Geographical Sciences  
East China Normal Univ.  
200241, Shanghai, China

**Zhenming Ge**

State Key Lab. of Estuarine and Coastal Research  
Institute of Eco-Chongming  
East China Normal Univ.  
200241, Shanghai, China

**Zhenlou Chen**

Key Lab. of Geographic Information Science (Ministry of Education)  
East China Normal Univ.  
200241, Shanghai, China  
and  
School of Geographical Sciences  
East China Normal Univ.  
200241, Shanghai, China

Global warming, rising sea levels, and saltwater intrusion interact to affect carbon cycling, specifically methane (CH<sub>4</sub>) flux in estuarine coastal wetlands. In the present study, *Phragmites australis* and *Spartina alterniflora* communities in the intertidal zone of the Yangtze estuary were selected for investigating CH<sub>4</sub> flux under different temperature (natural/warming), water level (high/low), and salinity (0, 5, 15, and 30‰) conditions. The average CH<sub>4</sub> flux (from April to October 2016) under natural conditions was 141.0 ± 21.5 and 502.8 ± 65.3 μmol m<sup>-2</sup> h<sup>-1</sup> for *P. australis* and *S. alterniflora* communities, respectively. Warming had a particularly pronounced effect on CH<sub>4</sub> emissions from the *P. australis* community and increased CH<sub>4</sub> flux by 130%. There was a significant correlation between CH<sub>4</sub> flux and water level; at high water levels, CH<sub>4</sub> flux was 2.64- and 3.78-fold higher in *P. australis* and *S. alterniflora* communities, respectively. Salinity had a significant pronounced effect on CH<sub>4</sub> emissions from the *P. australis* community, and there was a clear order (5‰ > 15‰ > 0‰ > 30‰) in CH<sub>4</sub> flux. The interaction between temperature and water level was the most important factor controlling CH<sub>4</sub> flux from wetlands; CH<sub>4</sub> emissions were greater at higher temperature and higher water levels. However, at low water level, the effect of salinity was more prominent. The results suggest that CH<sub>4</sub> flux from estuarine wetlands could be further enhanced in the future under the influence of rising sea levels due to global warming.

## Core Ideas

- We investigated estuarine environmental factors on CH<sub>4</sub> flux from two vegetation communities.
- Warming significantly affected on CH<sub>4</sub> emission from the *Phragmites australis* community.
- There was a significant correlation between CH<sub>4</sub> flux and water level in both communities.
- Salinity significantly affects CH<sub>4</sub> emissions from the *Phragmites australis* community.
- The interaction between temperature and water level was the most important factor controlling CH<sub>4</sub> flux.

Methane (CH<sub>4</sub>) is one of the most important greenhouse gases and plays a significant role in the atmosphere. The concentration of CH<sub>4</sub> has increased by 157% since the industrial revolution (WMO, 2018). Natural wetlands are an important sink for atmospheric CH<sub>4</sub>, and emission processes and inventories have received extensive attention (Saunio et al., 2016; Wang et al., 2009). Sea level rise caused by global warming, accompanied by the intensification of saltwater intrusion in coastal wetlands, affects the bio-

Soil Sci. Soc. Am. J. 83:1368–1377

doi:10.2136/sssaj2018.12.0472

Received 6 Dec. 2018.

Accepted 28 May 2019.

\*Corresponding author (dqwang@geo.ecnu.edu.cn).

© 2019 The Author(s). Re-use requires permission from the publisher.

geochemical cycles of tidal freshwater and brackish ecosystems (Chambers et al., 2013).

According to the Intergovernmental Panel on Climate Change report, global temperature will rise further. Compared with 1986 to 2005, the average global surface temperature from 2016 to 2035 is expected to rise by 0.3 to  $\sim 0.7^{\circ}\text{C}$  and by the end of this century will rise by 0.3 to  $\sim 4.8^{\circ}\text{C}$  (IPCC, 2014). Methanogenesis is temperature sensitive, and the rate of  $\text{CH}_4$  production is linearly or exponentially correlated with temperature (Wang et al., 2009). The metabolic rate and substrate supply of methanogenic microorganisms, both affected by temperature, are important factors controlling  $\text{CH}_4$  emissions from different types of wetland ecosystems (Whalen, 2005). Drake et al. (1996) reported that faster growth of wetland vegetation is accelerated at higher temperatures, stimulating the production of more organic matter, which alters the type and quantity of methanogenic substrates, indirectly affecting the function of methanogens. In addition,  $\text{CH}_4$  diffusion velocity is promoted by increasing temperature (Nahlik and Mitsch, 2011).

Global sea levels have risen on average 0.17 m due to anthropogenic climate change in the 20th century (Church and White, 2011). By 2100, global mean sea level will increase between 0.26 and 0.55 m and 0.45 and 0.82 m under the lowest and highest proposed greenhouse gas concentration scenarios, respectively (IPCC, 2014). Methane is produced under strict anaerobic conditions. Rising sea levels exert a powerful influence on  $\text{CH}_4$  emissions, extending the immersion time of estuarine wetland habitats, blocking  $\text{O}_2$  from diffusing into deeper soils, and thereby determining the depth of the aerobic anoxic boundary and the redox level (Shoemaker et al., 2012). Therefore, the soil moisture status largely determines  $\text{CH}_4$  emissions in a given region. Additionally, standing water depth determines the type of marsh plants, which governed  $\text{CH}_4$  transport, and the amount of plant litters, which resulted in the difference in labile organic C for methanogenesis among marshes. Labile organic C greatly affects  $\text{CH}_4$  concentration and the total amount of  $\text{CH}_4$  in porewater, whereas the latter is significantly related with  $\text{CH}_4$  emissions (Ding et al., 2002).

Rapid sea level rise, together with storm surges, droughts, and extreme tide events, may increase the frequency of seawater intrusions farther into historically low-salinity estuary zones (Neubauer et al., 2013). The increase of soil salinity, especially  $\text{NaCl}$  ( $\text{Cl}^-$ ), can result in a high-ionic-stress environment. High ionic strength can further induce osmotic stress in microbes, interfering with their cellular functions and reproduction or even causing cell lysis and the divergence of microbial community composition (Ikenaga et al., 2010). After salinity intrusion, cations in seawater (e.g.,  $\text{Na}^+$ ,  $\text{Mg}^{2+}$ ,  $\text{Ca}^{2+}$ , and  $\text{K}^+$ ) may quickly replace cations adsorbed in tidal wetland sediments (e.g.,  $\text{NH}_4^+$ ,  $\text{Fe}^{2+}$ , and  $\text{Al}^{3+}$ ) and then release them into porewater, which will eventually alter the pathways of microbial organic matter mineralization (Weston et al., 2006). Specifically, microbial pathways of organic matter mineralization shifted from methanogenesis to iron reduction and then followed by a transition to sulfate reduction, which became the dominant (>95%) organic matter miner-

alization pathway (Weston et al., 2006). Furthermore, it is generally acknowledged that saltwater intrusion will introduce high concentrations of sulfate ( $\text{SO}_4^{2-}$ ) (Chambers et al., 2013). The presence of  $\text{SO}_4^{2-}$  in marsh soils is conducive to allowing sulfate-reducing bacteria to outcompete methanogens for energy sources, and the enhanced  $\text{HS}^-$  concentrations, a byproduct of microbial sulfate reduction, can also exert ionic toxicity on methanogens (Joye and Hollibaugh, 1995), consequently inhibiting  $\text{CH}_4$  production. In addition, sulfate-reducing bacteria can oxidize  $\text{CH}_4$  (Capone and Kiene, 1988), directly reducing  $\text{CH}_4$  production.

The Yangtze has one of the biggest estuaries in the world, with extensive tidal wetlands. This is of special concern in the Yangtze where estuarine environmental factors are combined with past and current changes, such as soil microbial respiration and carbon (C) degradation, and affect the C cycles of microbial communities (Hu et al., 2014). In the present study, we selected two typical intertidal vegetation communities in the Yangtze estuary, based on *Phragmites australis* and *Spartina alterniflora*, as model mesocosms to investigate the effects of three environmental factors (warming, rising sea levels, and saltwater intrusion). The goal of this study was to expose tidal flat sediments to different estuarine environmental factors in mesocosms that simulated conditions and quantify the effect on methanogenesis ( $\text{CH}_4$  flux) from different vegetation communities of estuarine wetlands in the Yangtze and to contribute to research on greenhouse gas emissions and the responses of tidal wetlands to changes of estuarine environmental factors.

## MATERIALS AND METHODS

### Study Area

Chongming Dongtan, in the eastern part of Chongming Island in the Yangtze estuary, was selected as the sampling area, and a typical *P. australis* community has developed in the upper part of the intertidal zone. Since 1979, *S. alterniflora* has been introduced to promote siltation and to control tidal flat erosion, and this species has rapidly expanded following establishment. At present, the intertidal vegetation wetland community is dominated by *P. australis* and *S. alterniflora* (Li and Zhang, 2006).

### Establishing Mesocosms

Sediment samples (length, 40.0 cm; width, 30.0 cm; depth, 50.0 cm), including roots and shoots, were collected from typical *P. australis* and *S. alterniflora* communities outside the Chongming Dongtan levee ( $121^{\circ}59'22''$  E;  $31^{\circ}30'35''$  N) in the winter of 2016. The internal size of the incubator (length, 38.0 cm; width, 30.0 cm; depth, 50.0 cm) matched the sediment boxes, and there was a U-shaped stainless-steel groove (height, 3.0 cm; width, 2.0 cm) at the top of the incubator. A total of 48 sediment boxes from *P. australis* and 48 sediment boxes from *S. alterniflora* communities were collected, transported to the laboratory, and placed in incubators. Mesocosms consisted of two parts: a natural room (simulating the natural temperature conditions) and an artificial control room (simulating the warming conditions). For natural conditions, sediment boxes were

placed directly on the ground, and a transparent film was used to block the rain. The artificial control room was a glass house in which rising temperatures could be simulated. In each room, the simulation environment included two water levels (high and low). In addition, according to the tidal wetlands along an estuarine salinity gradient (Luo et al., 2017), there were four salinities (0, 5, 15, and 30‰). The atmospheric temperature simulation in the artificial control room mainly relied on the greenhouse effect and the air conditioning system and was 2.5 to 10.5°C higher than the natural room. We periodically added corresponding artificial seawater to the vegetation incubators to maintain the level in the high-water-level group at 3.0 cm above the sediment interface. The level in the low-water-level group was the same as the sediment interface height. In addition, to simulate tidal movements, the water in the container was drained through a hole at the bottom of the incubator and refilled to the original water level after 48 h. In each room, eight different culture conditions (high + 0‰/low + 0‰/high + 5‰/low + 5‰/high + 15‰/low + 15‰/high + 30‰/low + 30‰) were set according to different water levels and salinity to carry out the cultivation of *P. australis* and *S. alterniflora* communities, respectively, and three parallel samples were set for each condition. In each room, there were 24 *P. australis* and 24 *S. alterniflora* community incubators (Supplemental Fig. S1A, B).

### Simulation Procedure

The static closed chamber technique was used to measure CH<sub>4</sub> flux. The sampling box (length, 38.0 cm; width, 30.0 cm; height, 100.0 cm) has a closable top and an open bottom. The bottom of the box was directly inserted into the U-shaped stainless steel groove at the top of the incubators (Supplemental Fig. S1C). A rubber tube (length, 20.0 cm; inner diameter, 0.5 cm) was mounted on the top of the sampling box, and the end of the tube was sealed with a medical three-way valve. All rubber hoses and joints were sealed with silicone to ensure air tightness during sampling. Samples were taken monthly from April to October 2016. Gas samples were collected at 9:00 AM (0900 h), 12:00 PM (1200 h), 3:00 PM (1500 h), and 6:00 PM (1800 h) for 30.0 min each time. The boxes were placed in the U-shaped stainless steel grooves and sealed with an appropriate amount of water. A 50-mL sample of gas was extracted with a syringe at 0, 10, 20, and 30 min each time and injected into the sampling bag.

While sampling, the temperature was measured using an anemometer (Kestrel-4000, Kestrel). Photosynthetically active radiation was measured using the TES-1332 photometer (TES). The number of plants and the plant height were measured at the site. The aboveground parts of plants were removed and bagged, and the wet biomass was measured in the laboratory.

### Sample Analysis

The bulk density was determined after oven drying a known volume of subsample at 70°C until constant weight in the field. At the end of the experiment, soils were recovered from each box and analyzed for field water content (based on the mass loss before and

after drying at 105°C) and organic matter content (loss on ignition, 5 h at 550°C). Soil pH was measured with the portable water quality multiparameter detector (HACH). A 2:1 (water/soil) suspension was created and allowed to equilibrate for 30 min before measurement (Thomas, 1996). The available phosphorus content in soil was extracted with sodium bicarbonate solution supplemented with molybdenum antimony anti-reagent and determined by colorimetric method (Olsen, 1954). The available nitrogen content in the soil was measured with NaOH-hydrolyzation diffusion methods (Stanford, 1982). The available potassium content in soil was extracted by ammonium acetate and determined by flame photometry (Carter, 1993). The CH<sub>4</sub> content of gas samples was analyzed using a gas chromatograph (7890A, Agilent) equipped with a flame ionization detector and a column (2 m × 2 mm) packed with XMS (60/80). The flame ionization detector temperature was 200°C, the column temperature was 55°C, and high-purity N<sub>2</sub> was used as the carrier gas (30 cm<sup>3</sup> min<sup>-1</sup>).

### Data Calculation

Methane flux was calculated using the box gas flux formula:

$$F = (\Delta c / \Delta t) \times V / A$$

where  $F$  is the gas discharge flux ( $\mu\text{mol CH}_4 \text{ m}^{-2} \text{ h}^{-1}$ ),  $V$  is the volume of the enclosure (L),  $A$  is the cross-sectional area of the enclosure ( $\text{m}^2$ ), and  $\Delta c / \Delta t$  is the change in the concentration of CH<sub>4</sub> over time ( $\mu\text{mol m}^{-2} \text{ h}^{-1}$ ).

### Data Analysis

All graphs were drawn using OriginLab OriginPro9.0 and Golden Software Surfer14.0. IBM SPSS20 was used for analysis of data correlations and difference testing. The differences among conditions were analyzed using one-way ANOVA with Tukey's HSD for post hoc comparisons. The paired sample  $t$  test was used to test whether the environmental factors have a significant impact on each treatment. Error bars in the graphs represent the SD of parallel sample data. All analyses used a significance factor of  $\alpha = 0.05$ .

## RESULTS

### Sediment Parameters and Vegetation Growth Parameters

The average bulk density of sediment samples in the *P. australis* community ( $1.17 \pm 0.06 \text{ g cm}^{-3}$ ) was higher than that of the *S. alterniflora* community ( $0.87 \pm 0.06 \text{ g cm}^{-3}$ ) at the beginning of the cultivation. There were no significant differences in sediment parameters (pH, C%, nitrogen content, phosphorus content, and potassium content) in the two communities between the beginning and the end of the cultivation ( $p > 0.05$ ), and there were no correlations between sediment parameters and CH<sub>4</sub> emissions from the two communities ( $p > 0.05$ ). The growth of *P. australis* was mainly concentrated from April to June and proceeded gradually thereafter, whereas the growth of *S. alterniflora* continued until August. The density and biomass of the

**Table 1. Sediment parameter and vegetation growth parameter values at the beginning and the end of the cultivation. Data presented according to temperature treatment (natural and warming,  $n = 24$ ).**

	<i>Phragmites australis</i>			<i>Spartina alterniflora</i>		
	Beginning	Nature	Warming	Beginning	Nature	Warming
	Sediment parameters					
Bulk density, g cm <sup>-3</sup>	1.17 ± 0.06†	ND‡	ND	0.87 ± 0.06	ND	ND
pH	8.58 ± 0.10	8.62 ± 0.04	8.63 ± 0.03	8.72 ± 0.10	8.74 ± 0.05	8.70 ± 0.04
C, %	1.53 ± 0.03	1.47 ± 0.03	1.45 ± 0.03	1.61 ± 0.14	1.59 ± 0.03	1.60 ± 0.02
N, mg kg <sup>-1</sup>	25.3 ± 0.36	23.9 ± 0.59	23.7 ± 0.60	22.3 ± 1.04	22.2 ± 0.47	23.2 ± 1.22
P, mg kg <sup>-1</sup>	167.2 ± 8.76	173.7 ± 4.05	177.7 ± 3.62	154.8 ± 6.87	155.9 ± 3.32	161.6 ± 3.40
K, g kg <sup>-1</sup>	27.7 ± 1.08	28.0 ± 0.64	28.1 ± 0.47	30.3 ± 0.89	32.3 ± 0.67	31.1 ± 0.53
	Plant growth parameters					
Height, cm	23.1 ± 3.13	136.5 ± 9.02	138.3 ± 8.41	20.5 ± 0.87	121.0 ± 1.38	132.0 ± 3.60
Density, shoot m <sup>-2</sup>	67.7 ± 14.0	113.6 ± 15.4	70.5 ± 7.73	124.0 ± 9.11	179.6 ± 6.38	157.3 ± 12.8
Biomass, g m <sup>-2</sup>	ND	1239.6 ± 269.8	745.6 ± 158.7	ND	1327.7 ± 42.5	1602.4 ± 383.7

† Values are mean ± SE. There were no significant differences in sediment parameters (pH, C%, nitrogen content, phosphorus content and potassium content) in the two communities between the beginning and the end of the cultivation ( $p > 0.05$ ).

‡ No data (the bulk density of the two communities were measured at the beginning, the bulk density of different treatments after cultivation was not measured, or the biomass of the two communities before cultivation was not measured).

two communities continued to increase during the cultivation. In October, the average plant density of *P. australis* (113.6 ± 15.4 shoot m<sup>-2</sup>) and average biomass (1239.6 ± 269.8 g m<sup>-2</sup>) under natural conditions were higher than under warming conditions (density, 70.5 ± 7.73 shoot m<sup>-2</sup>; biomass, 745.6 ± 158.7 g m<sup>-2</sup>). The average density of *S. alterniflora* was also higher under natural conditions (179.6 ± 6.38 shoot m<sup>-2</sup>) than under control conditions (157.3 ± 12.8 shoot m<sup>-2</sup>), but the average biomass was higher under control conditions (1602.4 ± 383.7 g m<sup>-2</sup>) than under natural conditions (1327.7 ± 42.5 g m<sup>-2</sup>). The density and biomass of the *P. australis* community were lower than the *S. alterniflora* community (Table 1).

## Impact of Environmental Factors on CH<sub>4</sub> Emissions

### Effect of Temperature

There were significant differences in average CH<sub>4</sub> flux between natural and warming conditions in the *P. australis* community (159.7 ± 28.0; 204.4 ± 32.8 μmol m<sup>-2</sup> h<sup>-1</sup>;  $p < 0.05$ ). In particular, at high water levels and in freshwater (0‰), the average CH<sub>4</sub> flux between natural and warming conditions of the *P.*

*australis* community (141.0 ± 47.2; 324.8 ± 87.6 μmol m<sup>-2</sup> h<sup>-1</sup>) was increased by 2.3-fold in warming conditions. However, at the end of the growing season, the effect of warming was not obvious (Fig. 1). For the *S. alterniflora* community, CH<sub>4</sub> flux did not differ significantly between different conditions ( $p > 0.05$ ).

### Effect of Water Level

The CH<sub>4</sub> flux differed significantly between the two water levels, with the high water level exhibiting considerably higher average CH<sub>4</sub> flux (100.3 ± 21.8, 264.9 ± 32.8 μmol m<sup>-2</sup> h<sup>-1</sup> for *P. australis*; 186.7 ± 44.9, 705.7 ± 76.0 μmol m<sup>-2</sup> h<sup>-1</sup> for *S. alterniflora*;  $p < 0.01$ ). Regardless of temperature or salinity, the effect was extremely significant ( $p < 0.01$ ). During the entire growing season, the CH<sub>4</sub> flux of the *P. australis* community at high water level conditions was 2.64-fold greater than the low-water-level group, and the CH<sub>4</sub> flux of the *S. alterniflora* community was more sensitive to water level changes, with a 3.78-fold difference between the high and low water level groups (Fig. 2).

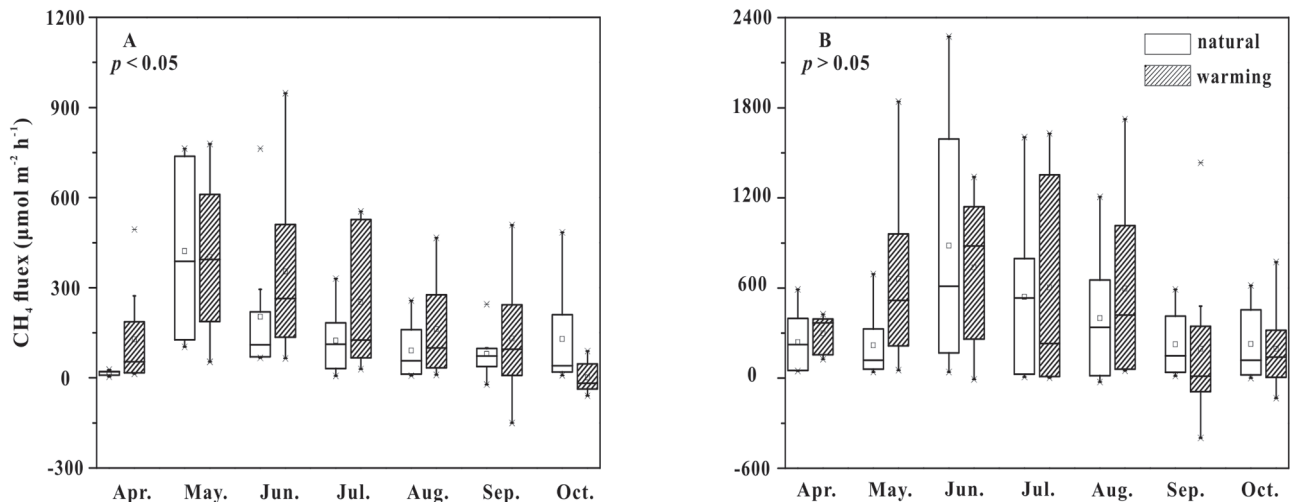


Fig. 1. Methane flux of *Phragmites australis* (A) and *Spartina alterniflora* (B) communities at natural and warming conditions.

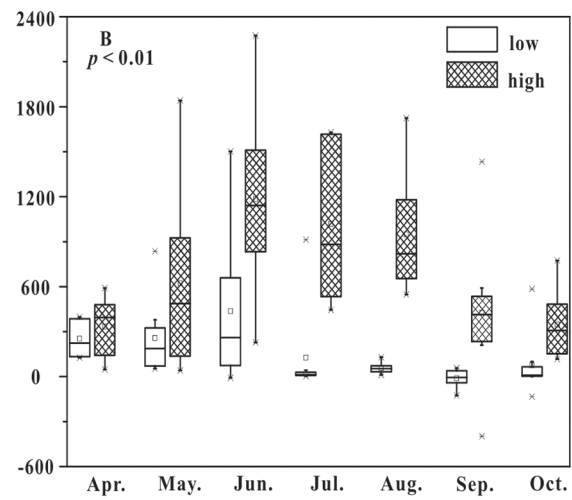
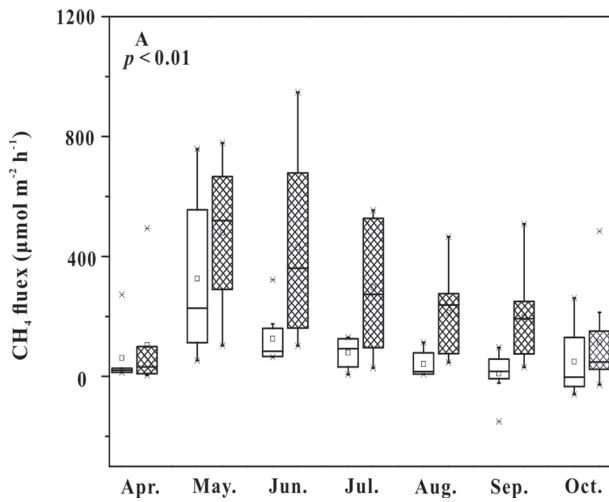


Fig. 2. Methane flux of *Phragmites australis* (A) and *Spartina alterniflora* (B) communities at low-water-level and high-water-level conditions

### Effect of Salinity

The responses of the two communities to differences in salinity were different. Differences in the *P. australis* community were significant ( $p < 0.01$ ). A clear order (5‰ > 15‰ > 0‰ > 30‰) in  $\text{CH}_4$  flux emerged in the *P. australis* community. By contrast, differences in the *S. alterniflora* community were not significant ( $p > 0.05$ ) (Fig. 3). However, under the polyhaline (30‰) conditions, the average  $\text{CH}_4$  flux in both communities ( $79.9 \pm 12.5 \mu\text{mol m}^{-2} \text{h}^{-1}$  for *P. australis*;  $152.7 \pm 33.9 \mu\text{mol m}^{-2} \text{h}^{-1}$  for *S. alterniflora*) was significantly inhibited compared with other environments ( $p < 0.01$ ). Furthermore, at high water levels, average inhibition in a polyhaline (30‰) environment was more significant ( $52.8 \pm 22.9 \mu\text{mol m}^{-2} \text{h}^{-1}$  for *P. australis*;  $123.6 \pm 38.6 \mu\text{mol m}^{-2} \text{h}^{-1}$  for *S. alterniflora*;  $p < 0.01$ ).

### Interactions between Estuarine Environmental Factors

Both communities showed interactions between the effects of estuarine environmental factors on  $\text{CH}_4$  flux (Fig. 4). At high water levels, the area of high  $\text{CH}_4$  flux values ( $>450 \mu\text{mol m}^{-2} \text{h}^{-1}$ ) increased (Fig. 4A, C). For the *P. australis* community,

high  $\text{CH}_4$  flux values ( $>450 \mu\text{mol m}^{-2} \text{h}^{-1}$ ) were observed under oligohaline (0–5‰) and mesohaline (5–15‰) conditions at temperatures of 22 to 35°C. As salinity increased,  $\text{CH}_4$  flux values ( $>450 \mu\text{mol m}^{-2} \text{h}^{-1}$ ) gradually decreased, eventually forming areas of low  $\text{CH}_4$  flux values ( $<150 \mu\text{mol m}^{-2} \text{h}^{-1}$ ) at polyhaline (25–30‰) conditions (Fig. 4A). Meanwhile, high  $\text{CH}_4$  flux values ( $>1000 \mu\text{mol m}^{-2} \text{h}^{-1}$ ) at high water levels in the *S. alterniflora* community mainly occurred under oligohaline (0–5‰) conditions at temperatures of 30 to 40°C (Fig. 4C), and low  $\text{CH}_4$  flux values ( $<200 \mu\text{mol m}^{-2} \text{h}^{-1}$ ) were observed under polyhaline (30‰) conditions at temperatures of 18 to 21°C. By contrast, at low water levels, salinity had a more pronounced effect on  $\text{CH}_4$  flux, resulting in obvious reduction in high  $\text{CH}_4$  flux values and a significant expansion of low  $\text{CH}_4$  flux values (Fig. 4B, D). For the *P. australis* community, only under mesohaline (10–20‰) conditions at 25°C was the  $\text{CH}_4$  flux  $>150 \mu\text{mol m}^{-2} \text{h}^{-1}$  (Fig. 4B). For the *S. alterniflora* community, high  $\text{CH}_4$  flux values ( $>400 \mu\text{mol m}^{-2} \text{h}^{-1}$ ) were mainly observed under mesohaline (10–20‰) at 18 to 26°C, whereas low  $\text{CH}_4$  flux values ( $<200 \mu\text{mol m}^{-2} \text{h}^{-1}$ ) were widely distributed in other conditions (Fig. 4D).

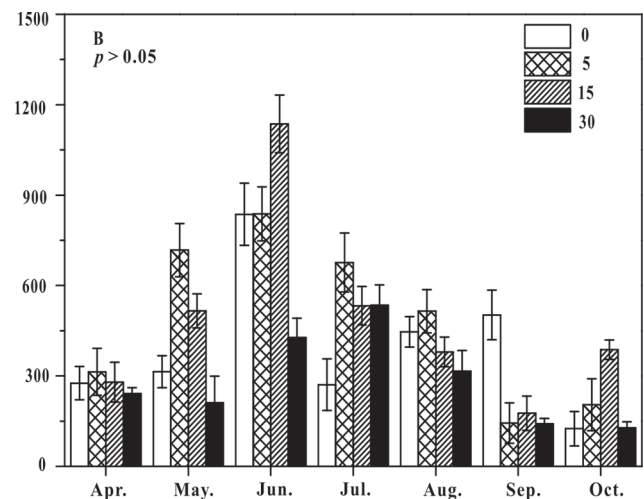
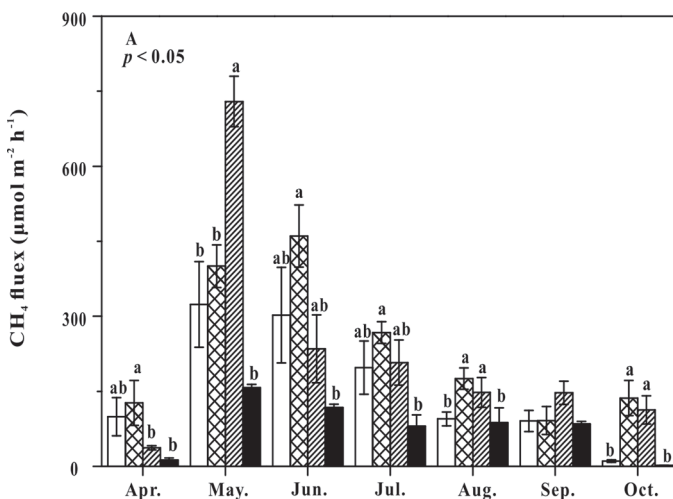


Fig. 3. Methane flux of *Phragmites australis* (A) and *Spartina alterniflora* (B) communities at different salinity conditions. Error bars denote standard error. Lowercase letters denote significant differences based on a one-way ANOVA and Tukey's HSD.

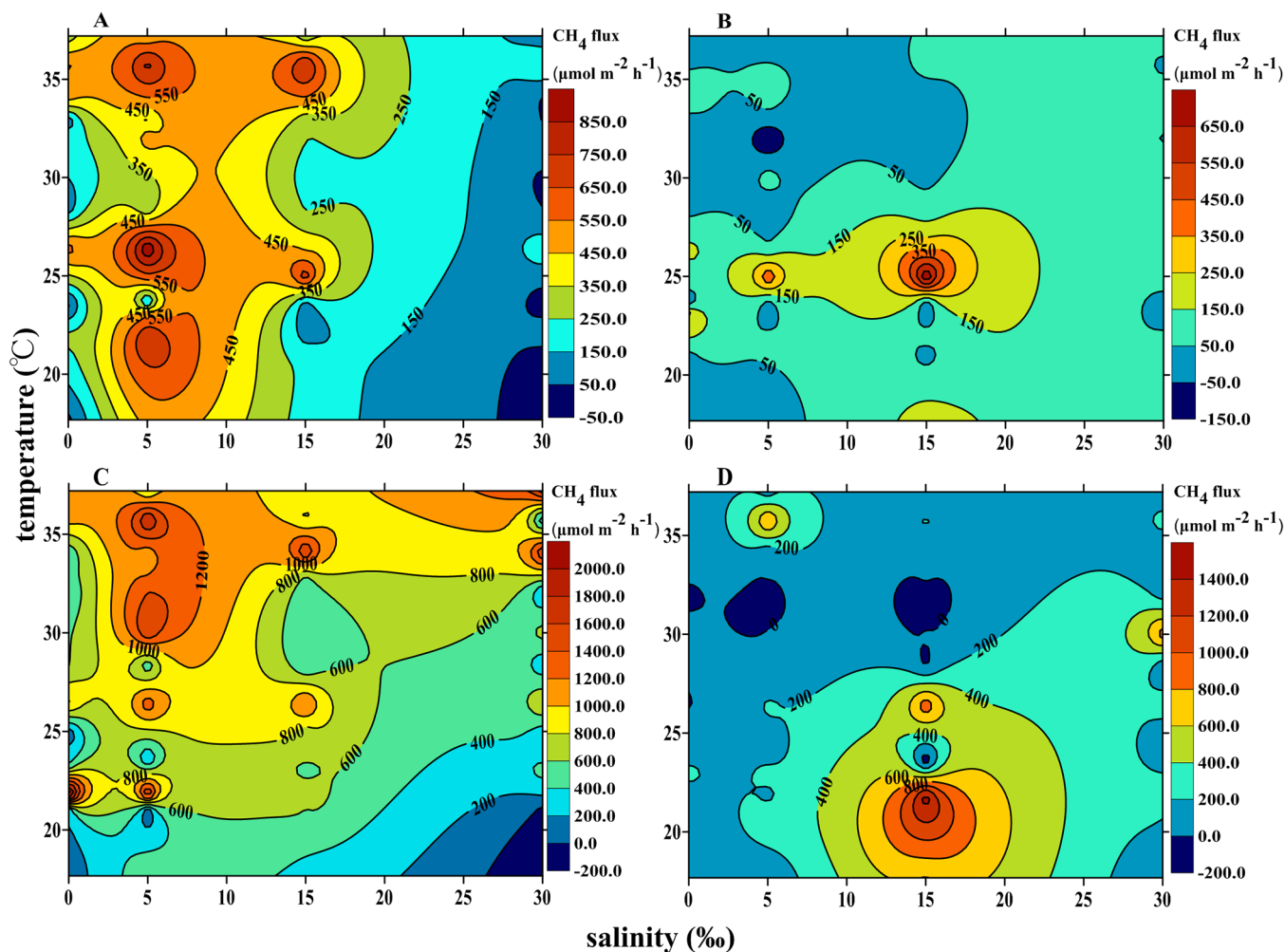


Fig. 4. Interactions between the effects of global change factors on CH<sub>4</sub> emissions. (A) Methane flux of *Phragmites australis* at high water levels. (B) Methane flux of *P. australis* at low water levels (C) Methane flux of *Spartina alterniflora* at high water levels. (D) Methane flux of *S. alterniflora* at low water levels.

## DISCUSSION

### Environmental Factors Influence CH<sub>4</sub> Flux in Different Vegetation Communities

The activity of methanogens is directly affected by temperature; as temperature increases, methanogens tend to be more active (Jerman et al., 2009). In this study, the CH<sub>4</sub> flux in the *P. australis* community showed a positive response to warming ( $p < 0.05$ ), especially during the early and middle stages of the growing season. This indicates that changes in biomass in vegetation during different growth stages can affect CH<sub>4</sub> flux in the community. For the same vegetation type, CH<sub>4</sub> flux was closely related to vegetation biomass (Duan et al., 2009). Compared with *P. australis*, the biomass of *S. alterniflora* was higher, which led to rapid and organic C accumulation and increased CH<sub>4</sub> emissions (Table 1; Fig. 1). However, the effect of warming on CH<sub>4</sub> flux in the *S. alterniflora* community was not significant. The higher net primary productivity of *S. alterniflora* is higher than *P. australis*, but the decomposition rate of litter is lower, so the *S. alterniflora* community has a high organic C reserve. Warming had a limited effect on the organic C of the *S. alterniflora* community; there was no significant difference in the organic C content of *S. alterniflora* community in the natural and warming environment ( $p > 0.05$ ) (Table 1), and

the effect on CH<sub>4</sub> flux was also not significant ( $p > 0.05$ ) (Fig. 1), indicating that different vegetation types have different responses when the temperature conditions change (Zhang et al., 2012).

As the water level increased, both communities displayed a significant increase in CH<sub>4</sub> flux ( $p < 0.01$ ). Methane is produced under strict anaerobic conditions in sediments, and the water level can directly affect gas diffusion rates, microbial activities, and oxygen utilization, which in turn can affect CH<sub>4</sub> flux (Chimner, 2004). It has been found that a 15.0-cm reduction in water level in freshwater wetland estuaries can result in a 25% increase in CH<sub>4</sub> oxidation in soil and in a consequent decrease in CH<sub>4</sub> flux (Bellisario et al., 1999). In the present work, the overlying water level was only 3.0 cm above the soil surface, but the promotional effect on CH<sub>4</sub> flux was significant ( $p < 0.01$ ). Due to the formation of a large amount of CH<sub>4</sub> in the ground, the CH<sub>4</sub> concentration gradient in the underground is established, and CH<sub>4</sub> diffuses upward from deeper sediments. Another possible explanation is that an increased water level may develop to increase the vertical accretion of the saline wetlands, increasing the tidal immersion depth and ultimately providing additional inorganic deposits to increase plant productivity (Morris et al., 2002). The increase in vegetation productivity will bring more

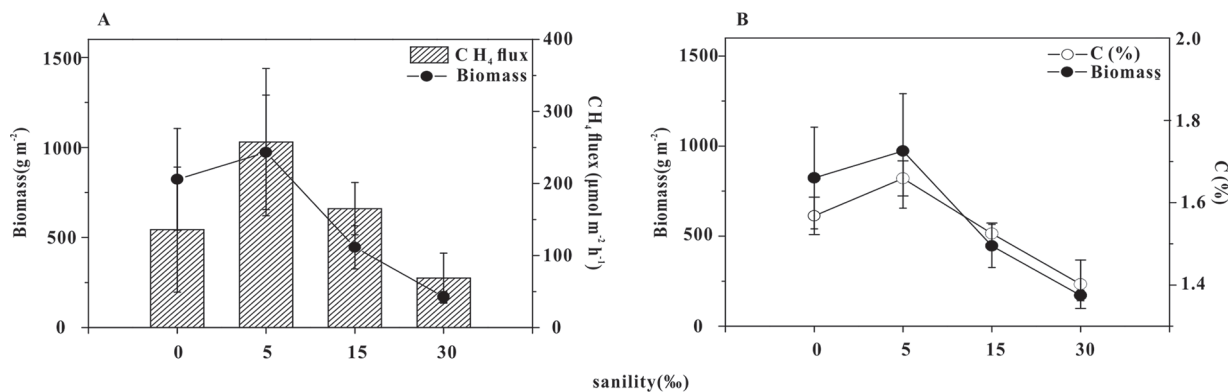


Fig. 5. Methane emissions and biomass (A) and C% and biomass (B) in the *Phragmites australis* community.

organic C sources to methanogens (Stanley and Ward 2010), which will promote the production of CH<sub>4</sub>.

Compared with CH<sub>4</sub> emissions from the freshwater environment (0‰), CH<sub>4</sub> emissions from the two communities did not reduce due to the increase of salinity under oligohaline (5‰) conditions (Fig. 3). Studies have shown that the production of CH<sub>4</sub> is controlled by low-molecular-weight soluble organic C sources such as acetate, which are easily adsorbed by soil (Liu et al., 2012). The availability of soluble organic C is increased at appropriate salt input (0–10‰) levels in soil. Appropriate salt input can enhance organic C mineralization rate in the soil (Craft et al., 2009) and increase CH<sub>4</sub> production (Weston et al., 2011). However, an excessive increase in electron acceptors due to salt input can compete with methanogens for substrates, reducing substrate availability and causing stress to the microbial community (Chidthaisong and Conrad, 2000). In this study, CH<sub>4</sub> in the polyhaline (30‰) conditions was significantly inhibited in both vegetation communities ( $p < 0.01$ ). The changes in biomass and CH<sub>4</sub> flux in *P. australis* vegetation were similar as salinity increased. When the salinity was 0 to 5‰, biomass and CH<sub>4</sub> flux increased, peaking in the oligohaline (5‰) environment, but declined in polyhaline (15–30‰) conditions (Fig. 5A). Salinity can negatively affect plant productivity and biomass by the accumulation of HS<sup>-</sup> (Koch, 1990) and the inhibition of nutrient uptake (Bradley and Morris, 1991). In most locations, the change in organic C substrate in tidal wetlands follows the change in plant productivity and biomass (Wie ski et al., 2010). The decomposition of wetland plants provides the ecosystem a major source of organic C, a universal electron donor driving many heterotrophic microbial processes (Stanley and Ward 2010). In our study, we also found that organic C changes with biomass in different salinity environments (Fig. 5B). This indicates that CH<sub>4</sub> flux is affected by salinity through effects on the biomass amount of vegetation. Previous studies showed that 10‰ salinity is the threshold for effective geochemical cycling in wetland soil. In an environment with <10‰ salinity (Weston et al., 2006), the manner of organic matter mineralization can rapidly transform from the methanogenesis to iron reduction and sulfate reduction (Weston et al., 2006), and other studies showed that salinity >13‰ can affect CH<sub>4</sub> emissions (Bartlett et al., 1987). In the present study, the CH<sub>4</sub> flux in the *S. alter-*

*niflora* community at a salinity of 15‰ was higher than that in a freshwater environment (Fig. 3B). There are many factors affecting soil microbial communities in wetland ecosystems, and establishing the threshold of the effects of salinity requires more in-depth research.

Both vegetation communities were a source of atmospheric CH<sub>4</sub>, except at the end of the growing season. There are differences in CH<sub>4</sub> emission fluxes for different types of wetlands in different regions. The CH<sub>4</sub> emissions flux in wetlands is the combined effect of various key environmental factors including temperature, water level, salinity, and organic C content. The CH<sub>4</sub> emissions from both communities were moderate in this study compared with tidal wetlands worldwide (Table 2).

### Interactions between Factors in the Context of Estuarine Environmental Factors

In this study, water level was found to be an important factor affecting CH<sub>4</sub> flux in different vegetation communities. The CH<sub>4</sub> flux of the two communities at high water level was significantly higher than that at low water level ( $p < 0.01$ ) (Fig. 2 and 4). In addition to increasing CH<sub>4</sub> flux in vegetation communities, higher water levels can alter the intensity and sensitivity of CH<sub>4</sub> in response to changes in temperature and salinity. In a previous study on the interactions between the effects of global change factors on estuarine wetland ecology, changes in wetland hydrological characteristics caused by sea level rise were considered the dominant factor affecting the balance between ecological function and material circulation (Cao et al., 1996; Casanova and Brock, 2000). The CH<sub>4</sub> flux from wetlands is affected by interactions between temperature and water level. When the soil is saturated with water, CH<sub>4</sub> flux changes with temperature (Roulet et al., 1992), indicating that the effect of temperature on CH<sub>4</sub> flux is more pronounced under high water levels, resulting in higher CH<sub>4</sub> emissions. By contrast, at low water levels, the effect of warming on CH<sub>4</sub> flux is reduced, and the effect of salinity is more obvious, resulting in lower CH<sub>4</sub> flux values.

### Implications for the Tidal Wetlands

Tidal wetlands cover a total area of ~538,000 to 552,000 km<sup>2</sup> (McLeod et al., 2011) but are considered important sinks of C in the biosphere (Nahlik and Fennessy, 2016). Although tidal wetlands

**Table 2. Comparison of methane emissions in this study and from tidal wetlands worldwide**

Study area	Vegetation type		Source
	<i>Phragmites australis</i>	<i>Spartina alterniflora</i>	
	————— $\mu\text{mol m}^{-2} \text{h}^{-1}$ —————		
Bay Tree Creek Salt Marsh, USA	7.08†		Bartlett et al. (1985)
Scheldt estuary, Belgium		158.0†	van der Nat and Middelburg (1998)
Scheldt estuary, The Netherlands		537.0†	van der Nat and Middelburg (2000)
Jiuduansha salt marsh, Yangtze River estuary, China	10.0–70.0†	13.1–41.3†	Cheng et al. (2007)
Min River estuary, China	688.0†	271.0†	Tong et al. (2010)
Liaohe Delta, China		32.5†	Huang et al. (2001)
Yangtze River estuary, China		82.6–728.0†	Ma et al. (2012)
Minjiang estuary, China		52.5–400.0†	Wang et al. (2015)
Nebraska Reed marshes, USA		570.0†	Kim et al. (2010)
Bay Tree Creek Salt Marsh, USA	159.0†		Bartlett et al. (1987)
Wanggang estuary, China	172.0†		Ding et al. (2010)
Wanggang estuary, China	46.9–229.4†		Zhang and Ding (2011)
Bay of Fundy, New Brunswick, Canada	1.48†	1.56†	Magenheimer et al. (1996)
Yangtze River estuary, China	40.0–851.0†	12.5–123.0†	Zelege et al. (2013)
Min River estuary China	1768.0–3565.0†	1140.0–3500.0†	Tong et al. (2012)
Gulf of Bothnia, Baltic sea, Finland		36.5–65.1†	Silvennoinen et al. (2008)
Narragansett Bay, Rhode Island, USA		15.0–1254.0	Martin and Moseman-Valtierra (2015)
Min River estuary, China		–963.0 to 1281.0†	Yang et al. (2017)
Liaohe Delta, China		43.8–156.3†	Olsson et al. (2015)
Yangtze River estuary, China	141.0 ± 21.5	502.0 ± 65.3	this study

† Indicates unit conversion.

act as large C sinks, they are also important sources of greenhouse gases, such as CH<sub>4</sub> (Bloom et al., 2017). As a result, tidal wetlands play an important role in regulating the C cycle at a global scale and quantifying the C budgets of wetlands, including C stores, uptake, and emission (Lu et al., 2017). Based on the findings of this study, increases in the temperature, water level, and oligohaline (5‰) conditions may have a greater impact on the methanogenesis from different vegetation communities. In the present study, the average CH<sub>4</sub> flux in *P. australis* and *S. alterniflora* communities during warming and high-water-level conditions were 321.0 ± 49.3 and 810.0 ± 98.6  $\mu\text{mol m}^{-2} \text{h}^{-1}$ , respectively. The findings of this study indicate that CH<sub>4</sub> emissions from tidal wetlands will be further strengthened by the combined effect of increased global warming and sea level rises in the future.

## CONCLUSIONS

The Yangtze has one of the biggest estuaries in the world, overlying extensive tidal flats that are highly vulnerable to changes in estuarine environmental factors. This study represents the first attempt to disentangle the effects of increasing temperature, increasing water level, increasing salinity, and the combination thereof on CH<sub>4</sub> emissions using experimental tidal mesocosms. Results indicated that global climate change has significantly changed the CH<sub>4</sub> emissions pattern of the estuarine coastal wetlands. In addition, there were differences in the corresponding changes in environmental factors among different vegetation communities. Warming can significantly increase CH<sub>4</sub> emissions from the *P. australis* community ( $p < 0.05$ ). At high water levels, CH<sub>4</sub> emissions from both communities increased significantly ( $p < 0.01$ ). The biomass amount of the vegetation

community was affected by salinity, which leads to higher CH<sub>4</sub> emissions at oligohaline (0–5‰) conditions. The interaction between high water level and warming was a significant factor affecting the CH<sub>4</sub> emission of the community. At the high water level, the effect of high temperature was more obvious. On the contrary, the inhibition of salinity at the lower water level was more dominant.

In addition to the observed changes in CH<sub>4</sub> emissions, this study identified other potentially important biogeochemical responses to simulated estuarine environmental factors. Most notably, CH<sub>4</sub> emissions from tidal wetlands will be further strengthened by the combined effect of increased global warming and sea level rises. To fully understand the implications of estuarine environmental factors on the Yangtze estuary, field studies that incorporate C inputs and natural feedback mechanisms are needed.

## SUPPLEMENTAL MATERIAL

The supplemental figure shows plant community incubators in the mesocosms.

## ACKNOWLEDGMENTS

This study was supported by the National Natural Science Foundation of China (grants 41671467, 41473049, and 41871088), the Ministry of Science and Technology Project Foundation (2014FY210600), the Shanghai Municipal Natural Science Foundation (grant ZR1412100), and the research fund from the State Key Laboratory of Estuarine and Coastal Research (2015KYYW03). We thank Wang Guochen and Nie Jiaqin for enthusiastic field sampling and laboratory assistance.

## REFERENCES

Bartlett, K.B., D.S. Bartlett, R.C. Harriss, and D.I. Sebacher. 1987. Methane emissions along a salt marsh salinity gradient. *Biogeochemistry* 4(3):183–



202. doi:10.1007/BF02187365
- Bartlett, K.B., R.C. Harriss, and D.I. Sebacher. 1985. Methane flux from coastal salt marshes. *J. Geophys. Res. Atmos.* 90(D3):5710–5720. doi:10.1029/JD090iD03p05710
- Bellisario, L., J. Bubier, T. Moore, and P. Chanton. 1999. Controls on CH<sub>4</sub> emissions from a northern peatland. *Global Biogeochem. Cycles* 13(1):81–91. doi:10.1029/1998GB900021
- Bloom, A.A., K.W. Bowman, M. Lee, A.J. Turner, and D.J. Jacob. 2017. A global wetland methane emissions and uncertainty dataset for atmospheric chemical transport models (WetCHARTs version 1.0). *Geosci. Model Dev.* 10(6):2141–2156. doi:10.5194/gmd-10-2141-2017
- Bradley, P.M., and J.T. Morris. 1991. The influence of salinity on the kinetics of NH<sub>4</sub><sup>+</sup> uptake in *Spartina alterniflora*. *Oecologia* 85(3):375–380. doi:10.1007/BF00320613
- Cao, M., S. Marshall, and K. Gregson. 1996. Global carbon exchange and methane emissions from natural wetlands: Application of a process-based model. *J. Geophys. Res. Atmos.* 101(D9):14399–14414. doi:10.1029/96JD00219
- Capone, D.G., and R.P. Kiene. 1988. Comparison of microbial dynamics in marine and freshwater sediments: Contrasts in anaerobic carbon catabolism. *Limnol. Oceanogr.* 33(4):725–749. doi:10.4319/lo.1988.33.4part2.0725
- Carter, M.R. 1993. Soil sampling and methods of analysis. CRC Press, Boca Raton, FL.
- Casanova, M.T., and M.A. Brock. 2000. How do depth, duration and frequency of flooding influence the establishment of wetland plant communities? *Plant Ecol.* 147(2):237–250. doi:10.1023/A:1009875226637
- Chambers, L.G., T.Z. Osborne, and K.R. Reddy. 2013. Effect of salinity-altering pulsing events on soil organic carbon loss; along an intertidal wetland gradient: A laboratory experiment. *Biogeochemistry* 115(1–3):363–383. doi:10.1007/s10533-013-9841-5
- Cheng, X., R. Peng, J. Chen, Y. Luo, Q. Zhang, S. An, et al. 2007. CH<sub>4</sub> and N<sub>2</sub>O emissions from *Spartina alterniflora* and *Phragmites australis* in experimental mesocosms. *Chemosphere* 68:420–427. doi:10.1016/j.chemosphere.2007.01.004
- Chidthaisong, A., and R. Conrad. 2000. Turnover of glucose and acetate coupled to reduction of nitrate, ferric iron and sulfate and to methanogenesis in anoxic rice field soil. *FEMS Microbiol. Ecol.* 31(1):73–86. doi:10.1111/j.1574-6941.2000.tb00673.x
- Chimner, R.A. 2004. Soil respiration rates of tropical peatlands in Micronesia and Hawaii. *Wetlands* 24(1):51–56. doi:10.1672/0277-5212(2004)024[0051:SRROT]2.0.CO;2
- Church, J.A., and N.J. White. 2011. Sea-level rise from the late 19th to the early 21st century. *Surv. Geophys.* 32(4–5):585–602. doi:10.1007/s10712-011-9119-1
- Craft, C., J. Clough, J. Ehman, S. Joye, R. Park, S. Pennings, et al. 2009. Forecasting the effects of accelerated sea-level rise on tidal marsh ecosystem services. *Front. Ecol. Environ.* 7(2):73–78. doi:10.1890/070219
- Ding, W., Z. Cai, H. Tsuruta, and X. Li. 2002. Effect of standing water depth on methane emissions from freshwater marshes in northeast China. *Atmos. Environ.* 36(33):5149–5157. doi:10.1016/S1352-2310(02)00647-7
- Ding, W., Y. Zhang, and Z. Cai. 2010. Impact of permanent inundation on methane emissions from a *Spartina alterniflora* coastal salt marsh. *Atmos. Environ.* 44(32):3894–3900. doi:10.1016/j.atmosenv.2010.07.025
- Drake, B., G. Peresta, E. Beugeling, and R. Matamala. 1996. Long-term elevated CO<sub>2</sub> exposure in a Chesapeake Bay Wetland: Ecosystem gas exchange, primary production, and tissue nitrogen. *Carbon Dioxide Terrestrial Ecosyst.* 1996:197–214
- Duan, X., X. Wang, and Z. Ouyang. 2009. Influence of common Reed (*Phragmites australis*) on CH<sub>4</sub> production and transport in wetlands: Results from single-plant laboratory experiments. *Water Air Soil Pollut.* 197(1–4):185–191. doi:10.1007/s11270-008-9802-0
- Hu, Y., L. Wang, Y. Tang, Y. Li, J. Chen, et al. 2014. Variability in soil microbial community and activity between coastal and riparian wetlands in the Yangtze River estuary: Potential impacts on carbon sequestration. *Soil Biol. Biochem.* 70:221–228. doi:10.1016/j.soilbio.2013.12.025
- Huang, G., Y. Li, G. Chen, Y. Yang, and C. Zhao. 2001. Influence of environmental factors on CH<sub>4</sub> emission from Reed wetland. *Chinese J. Environmental Sci.* 22(1):1–5.
- Ikenaga, M., R. Guevara, A.L. Dean, C. Pisani, and J.N. Boyer. 2010. Changes in community structure of sediment bacteria along the Florida Coastal Everglades marsh–mangrove–seagrass salinity gradient. *Microb. Ecol.* 59(2):284–295. doi:10.1007/s00248-009-9572-2
- IPCC. 2014. Climate change 2014: Synthesis report. IPCC, Geneva, Switzerland.
- Jerman, V., M. Metje, I. Mandić-Mulec, and P. Frenzel. 2009. Wetland restoration and methanogenesis: The activity of microbial populations and competition for substrates at different temperatures. *Biogeosciences* 6(1):1127–1138.
- Joye, S.B., and J.T. Hollibaugh. 1995. Influence of sulfide inhibition of nitrification on nitrogen regeneration in sediments. *Science* 270(5236):623–625. doi:10.1126/science.270.5236.623
- Kim, J., S.B. Verma, and D.P. Billesbach. 2010. Seasonal variation in methane emission from a temperate *Phragmites*-dominated marsh: Effect of growth stage and plant-mediated transport. *Glob. Change Biol.* 5(4):433–440. doi:10.1046/j.1365-2486.1999.00237.x
- Koch, M.S. 1990. Mechanism for the hydrogen sulfide-induced growth limitation in wetland macrophytes. *Limnol. Oceanogr.* 35(2):399–408. doi:10.4319/lo.1990.35.2.0399
- Li, H., and L. Zhang. 2006. Distribution of an exotic plant *Spartina alterniflora* in Shanghai. *Shengwu Duoyangxing* 14(2):114–120.
- Liu, S., Z. Ling, Q. Liu, and J. Zou. 2012. Fe(III) fertilization mitigating net global warming potential and greenhouse gas intensity in paddy rice-wheat rotation systems in China. *Environ. Pollut.* 164(9):73–80. doi:10.1016/j.envpol.2012.01.029
- Lu, W., J. Xiao, and L. Fang. 2017. Contrasting ecosystem CO<sub>2</sub> fluxes of inland and coastal wetlands a meta-analysis of eddy covariance data. *Glob. Change Biol.* 23(3):1180–1198. doi:10.1111/gcb.13424
- Luo, M., J.F. Huang, W.F. Zhu, and C. Tong. 2017. Impacts of increasing salinity and inundation on rates and pathways of organic carbon mineralization in tidal wetlands: A review. *Hydrobiologia* 111:1–19.
- Ma, A., J. Lu, and T. Wang. 2012. Effects of elevation and vegetation on methane emissions from a freshwater estuarine wetland. *J. Coast. Res.* 285(6):1319–1329. doi:10.2112/JCOASTRES-D-11-00001.1
- Magenheimer, J.F., T.R. Moore, G.L. Chmura, and R.J. Daoust. 1996. Methane and carbon dioxide flux from a macrotidal salt marsh, Bay of Fundy, New Brunswick. *Estuaries* 19(1):139–145. doi:10.2307/1352658
- Martin, R.M., and S. Moseman-Valtierra. 2015. Greenhouse gas fluxes vary between *Phragmites Australis* and native vegetation zones in coastal wetlands along a salinity gradient. *Wetlands* 35(6):1021–1031. doi:10.1007/s13157-015-0690-y
- McLeod, E., G.L. Chmura, S. Bouillon, R. Salm, M. Björk, et al. 2011. A blueprint for blue carbon: Toward an improved understanding of the role of vegetated coastal habitats in sequestering CO<sub>2</sub>. *Front. Ecol. Environ.* 9(10):552–560. doi:10.1890/110004
- Morris, J.T., P.V. Sundareshwar, C.T. Nietch, B. Kjerfve, and D.R. Cahoon. 2002. Responses of coastal wetlands to rising sea level. *Ecology* 83(10):2869–2877. doi:10.1890/0012-9658(2002)083[2869:ROCWTR]2.0.CO;2
- Nahlik, A.M., and M.S. Fennessy. 2016. Carbon storage in US wetlands. *Nat. Commun.* 7:13835. doi:10.1038/ncomms13835
- Nahlik, A.M., and W.J. Mitsch. 2011. Methane emissions from tropical freshwater wetlands located in different climatic zones of Costa Rica. *Glob. Change Biol.* 17(3):1321–1334. doi:10.1111/j.1365-2486.2010.02190.x
- Neubauer, S.C., R.B. Franklin, and D.J. Berrier. 2013. Saltwater intrusion into tidal freshwater marshes alters the biogeochemical processing of organic carbon. *Biogeosciences* 10(12):8171–8183.
- Olsen, S.R. 1954. Estimation of available phosphorus in soils by extraction with sodium bicarbonate. USDA, Washington, DC.
- Olsson, L., S. Ye, X. Yu, M. Wei, K.W. Krauss, and H. Brix. 2015. Factors influencing CO<sub>2</sub> and CH<sub>4</sub> emissions from coastal wetlands in the Liaohe Delta, Northeast China. *Biogeosciences* 12(4):3469–3503.
- Roulet, N.T., R. Ash, and T.R. Moore. 1992. Low Boreal wetlands as a source of atmospheric methane. *J. Geophys. Res. Atmos.* 97(D4):3739–3749. doi:10.1029/91JD03109
- Saunio, M., R.B. Jackson, P. Bousquet, B. Poulter, and J.G. Canadell. 2016. The growing role of methane in anthropogenic climate change. *Environ. Res. Lett.* 11(12):120207. doi:10.1088/1748-9326/11/12/120207
- Shoemaker, J.K., R.K. Varner, and D.P. Schrag. 2012. Characterization of subsurface methane production and release over 3 years at a New Hampshire wetland. *Geochim. Cosmochim. Acta* 91(5):120–139. doi:10.1016/j.gca.2012.05.029

- Silvennoinen, H., L. Anu, J. Rintala, and P.J. Martikainen. 2008. Greenhouse gas fluxes from the eutrophic Temmesjoki River and its estuary in the Liminganlahti Bay (the Baltic Sea). *Biogeochemistry* 90(2):193–208. doi:10.1007/s10533-008-9244-1
- Stanford, G. 1982. Assessment of soil nitrogen availability: Nitrogen in agricultural soils. *Soil Sci. Soc. Am. J.* 1982:651–688.
- Stanley, E.H., and A.K. Ward. 2010. Effects of vascular plants on seasonal pore water carbon dynamics in a lotic wetland. *Wetlands* 30(5):889–900. doi:10.1007/s13157-010-0087-x
- Thomas, G.W. 1996. Soil pH and soil acidity. In: D.L. Sparks, editor, *Methods of soil analysis. Part 3. Chemical methods.* SSSA Book Ser. 5. SSSA, Madison, WI. p. 475–490.
- Tong, C., W.Q. Wang, J.F. Huang, V. Gauci, L.H. Zhang, et al. 2012. Invasive alien plants increase CH<sub>4</sub> emissions from a subtropical tidal estuarine wetland. *Biogeochemistry* 111(1-3):677–693. doi:10.1007/s10533-012-9712-5
- Tong, C., W.-Q. Wang, C.-S. Zeng, and R. Marrs. 2010. Methane (CH<sub>4</sub>) emission from a tidal marsh in the Min River estuary, southeast China. *J. Environ. Sci. Health A Tox. Hazard Subst. Environ. Eng.* 45(4):506–516. doi:10.1080/10934520903542261
- van der Nat, F.J.W.A., and J.J. Middelburg. 1998. Seasonal variation in methane oxidation by the rhizosphere of *Phragmites australis* and *Scirpus lacustris*. *Aquat. Bot.* 61(2):95–110. doi:10.1016/S0304-3770(98)00072-2
- van der Nat, F.J., and J.J. Middelburg. 2000. Methane emission from tidal freshwater marshes. *Biogeochemistry* 49(2):103–121. doi:10.1023/A:1006333225100
- Wang, D., Z. Chen, and S. Xu. 2009. Methane emission from Yangtze Estuarine Wetland, China. *J. Geophys. Res. Biogeosci.* 114(G2):1588–1593.
- Wang, C., D.Y.F. Lai, C. Tong, W. Wang, J. Huang, and C. Zeng. 2015. Variations in temperature sensitivity (Q<sub>10</sub>) of CH<sub>4</sub> emission from a subtropical estuarine marsh in Southeast China. *PLoS One* 10(5):E0125227. doi:10.1371/journal.pone.0125227
- Weston, N.B., R.E. Dixon, and S.B. Joye. 2006. Ramifications of increased salinity in tidal freshwater sediments: Geochemistry and microbial pathways of organic matter mineralization. *J. Geophys. Res. Biogeosci.* 111(G1):G01009. doi:10.1029/2005JG000071
- Weston, N.B., S.C. Neubauer, and D.J. Velinsky. 2011. Accelerated microbial organic matter mineralization following salt-water intrusion into tidal freshwater marsh soils. *Biogeochemistry* 102(1–3):135–151. doi:10.1007/s10533-010-9427-4
- Whalen, S.C. 2005. Biogeochemistry of methane exchange between natural wetlands and the atmosphere. *Environ. Eng. Sci.* 22(1):73–94. doi:10.1089/ees.2005.22.73
- WMO. 2018. WMO greenhouse gas bulletin: The state of greenhouse gases in the atmosphere based on global observations through 2017. World Meteorological Organization, Geneva, Switzerland. [https://library.wmo.int/doc\\_num.php?explnum\\_id=5455](https://library.wmo.int/doc_num.php?explnum_id=5455) (accessed 1 Dec. 2018).
- Yang, W.B., C.S. Yuan, C. Tong, P. Yang, L. Yang, and B.Q. Huang. 2017. Diurnal variation of CO<sub>2</sub>, CH<sub>4</sub>, and N<sub>2</sub>O emission fluxes continuously monitored in-situ in three environmental habitats in a subtropical estuarine wetland. *Mar. Pollut. Bull.* 119(1):289–298. doi:10.1016/j.marpolbul.2017.04.005
- Zelege, J., Q. Sheng, J.G. Wang, M.Y. Huang, F. Xia, J.-H. Wu, et al. 2013. Effects of *Spartina alterniflora* invasion on the communities of methanogens and sulfate-reducing bacteria in estuarine marsh sediments. *Front. Microbiol.* 4:243. doi:10.3389/fmicb.2013.00243
- Zhang, Y., and W. Ding. 2011. Diel methane emissions in stands of *Spartina alterniflora* and *Suaeda salsa* from a coastal salt marsh. *Aquat. Bot.* 95(4):262–267. doi:10.1016/j.aquabot.2011.08.005
- Zhang, C.B., H.Y. Sun, Y. Ge, B.J. Gu, H. Wang, and J. Chang. 2012. Plant species richness enhanced the methane emission in experimental microcosms. *Atmos. Environ.* 62(2):180–183. doi:10.1016/j.atmosenv.2012.08.034